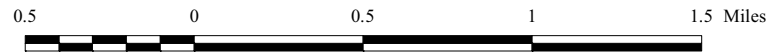
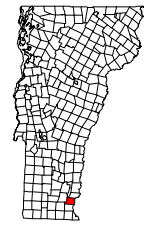


# Conserved and Working Lands (with existing development)

## Town of Dummerston, Vt.

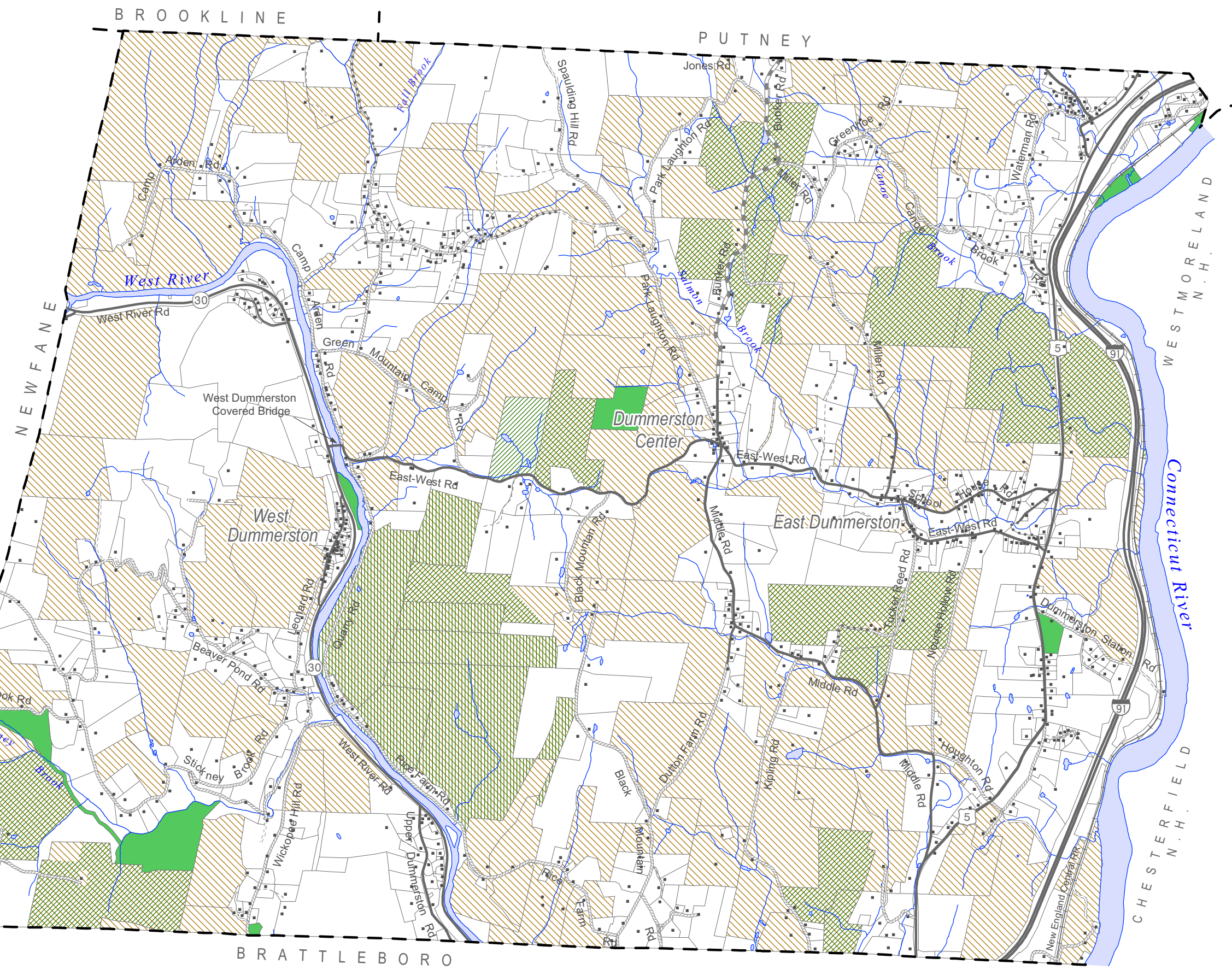
March 2017



- Structures
- Parcel boundary
- Public land (state or town)
- The Nature Conservancy property
- Private land with conservation easement
- Parcel enrolled in Use Value Appraisal (2016)

Sources:

- Parcel lines are from GIS data developed by Cartographic Technologies, Inc. (CTI), Brattleboro, Vt., and are current to 2014.
- Data on lands under conservation protection were obtained from WRC mapping, the Town of Dummerston, and Vermont's Protected Lands database (VGIS data layer (PROTECTEDLND)). Data are current to 2016.
- Data on parcels enrolled in the Use Value Appraisal Program (i.e. "current use program") in 2016 were compiled using information from the Dummerston grand list, and a WRC UVA mapping project. Those portions of a parcel excluded from UVA enrollment which are less than about 5 acres are not shown as excluded on this map.
- Structure locations were captured using GPS technology for Vermont's Enhanced 9-1-1 program. Locations have been edited by Windham Regional Commission in 2005, 2009, and 2017 using Vermont digital orthophotos and National Agricultural Imagery Program orthophotos.

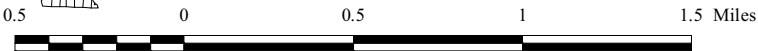
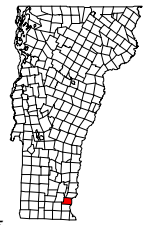




# Existing Land Use by Parcel

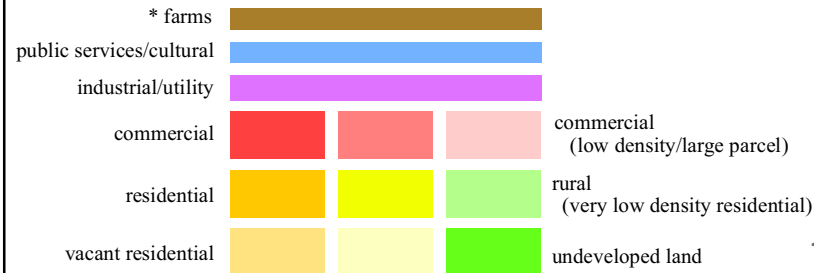
## Town of Dummerston, Vt.

March 2017



**Parcel use:**

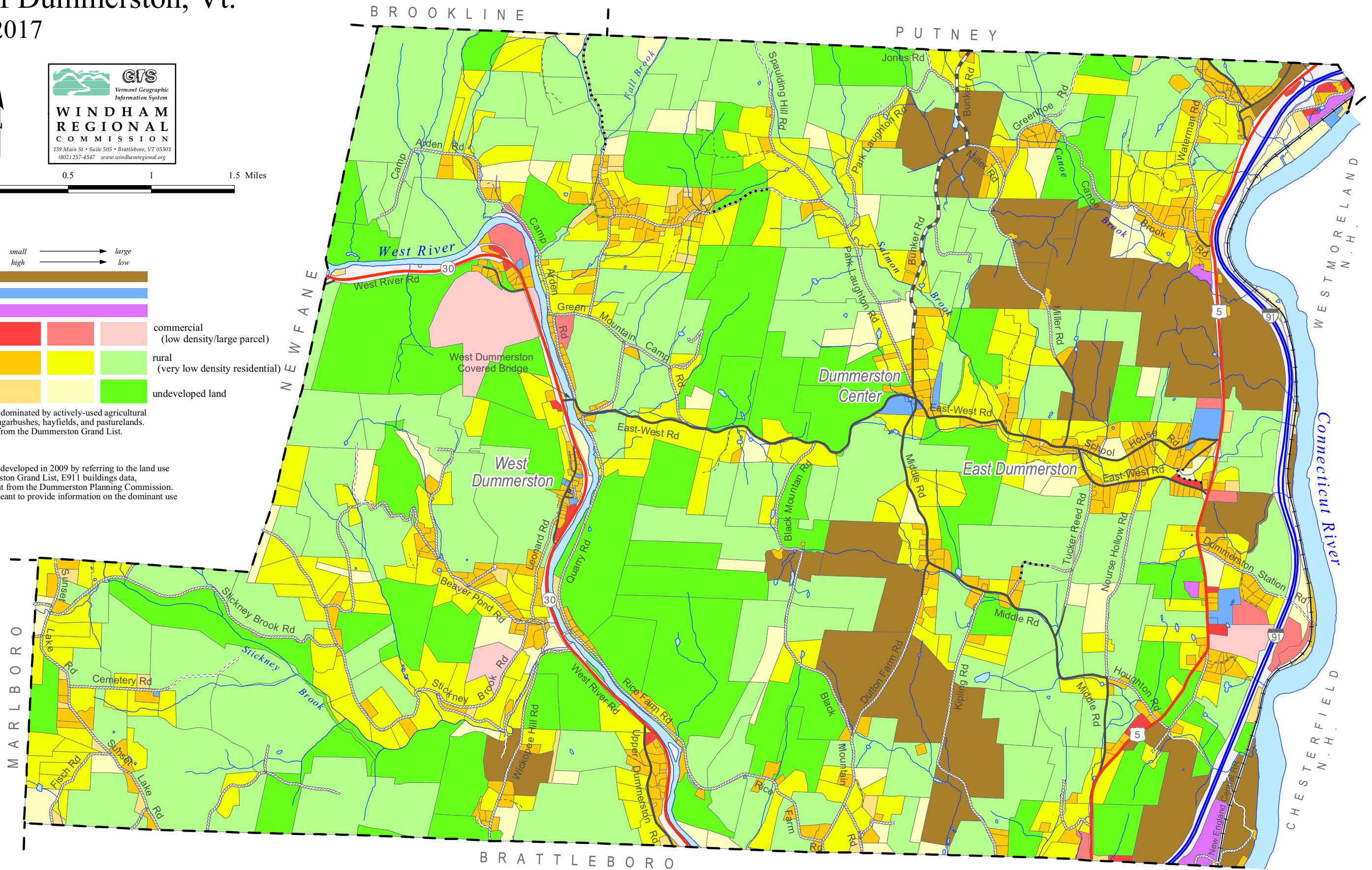
size of parcel - small → large  
 intensity of use - high → low



\* farms are parcels dominated by actively-used agricultural land other than sugarbushes, hayfields, and pasturelands. Determination is from the Dummerston Grand List.

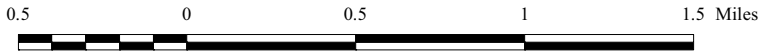
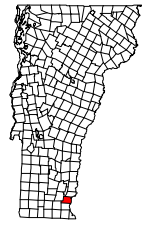
**Sources:**

- Parcel land use was developed in 2009 by referring to the land use codes in the Dummerston Grand List, E911 buildings data, orthophotos, and input from the Dummerston Planning Commission. Land use codes are meant to provide information on the dominant use of the parcel.





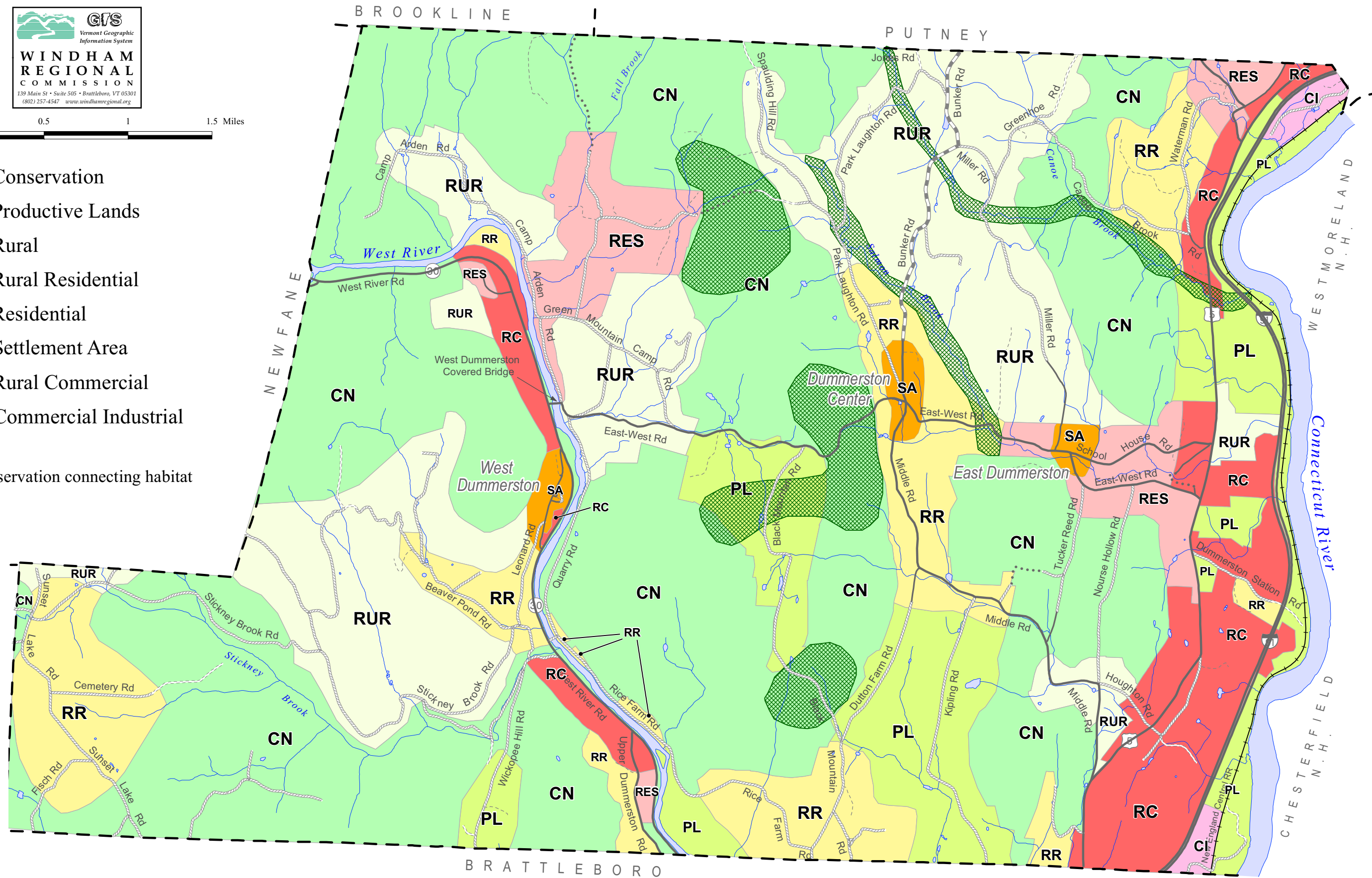
# Future Land Use Town of Dummerston, Vt.



- CN** Conservation
- PL** Productive Lands
- RUR** Rural
- RR** Rural Residential
- RES** Residential
- SA** Settlement Area
- RC** Rural Commercial
- CI** Commercial Industrial

Overlay areas:

- Conservation connecting habitat

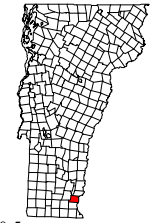

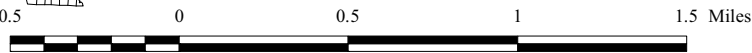





# Natural Resources









## Town of Dummerston, Vt.

March 2017

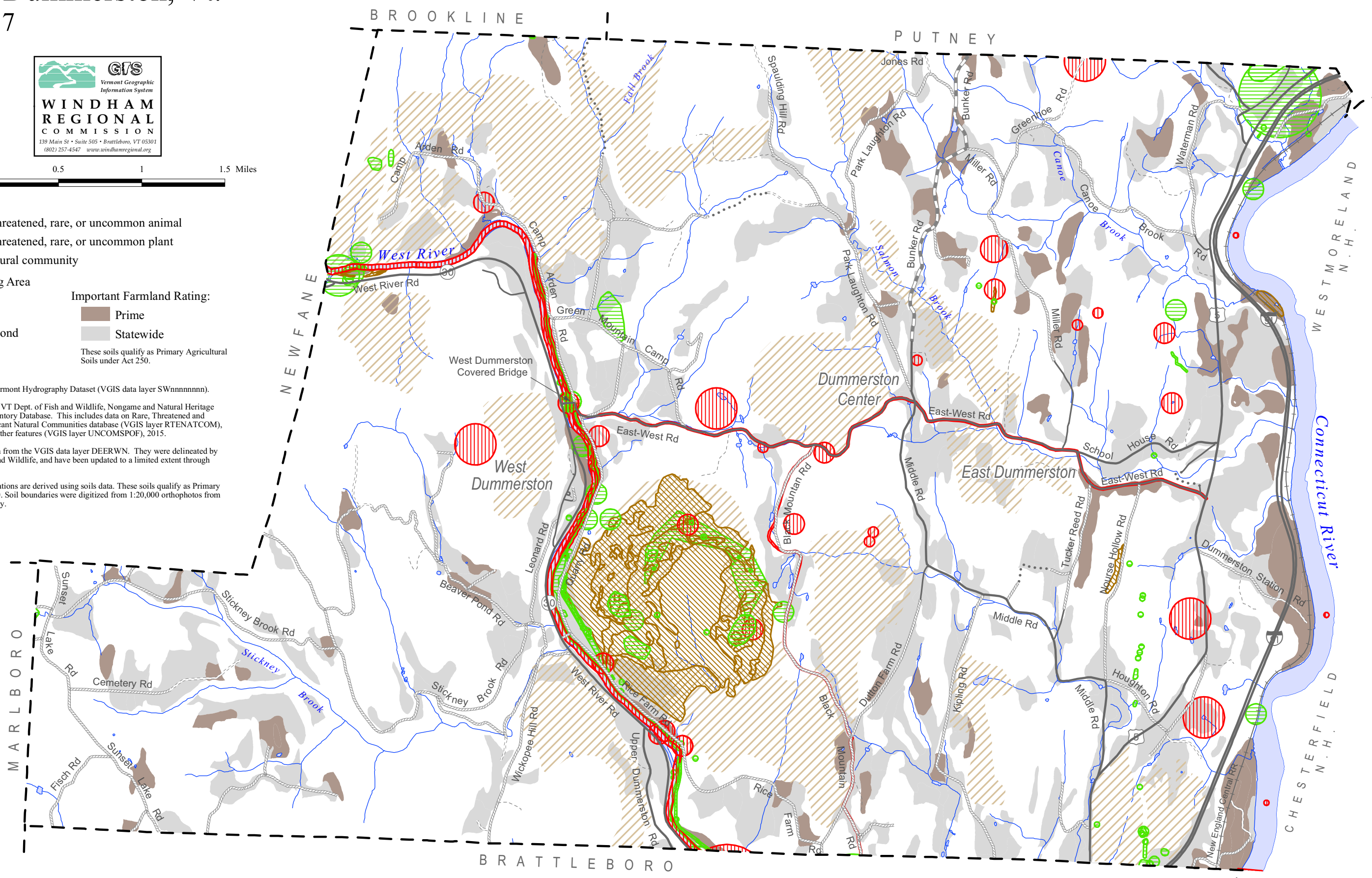


**WINDHAM REGIONAL COMMISSION**  
 139 Main St • Suite 505 • Brattleboro, VT 05301  
 (802) 257-4547 www.windhamregional.org

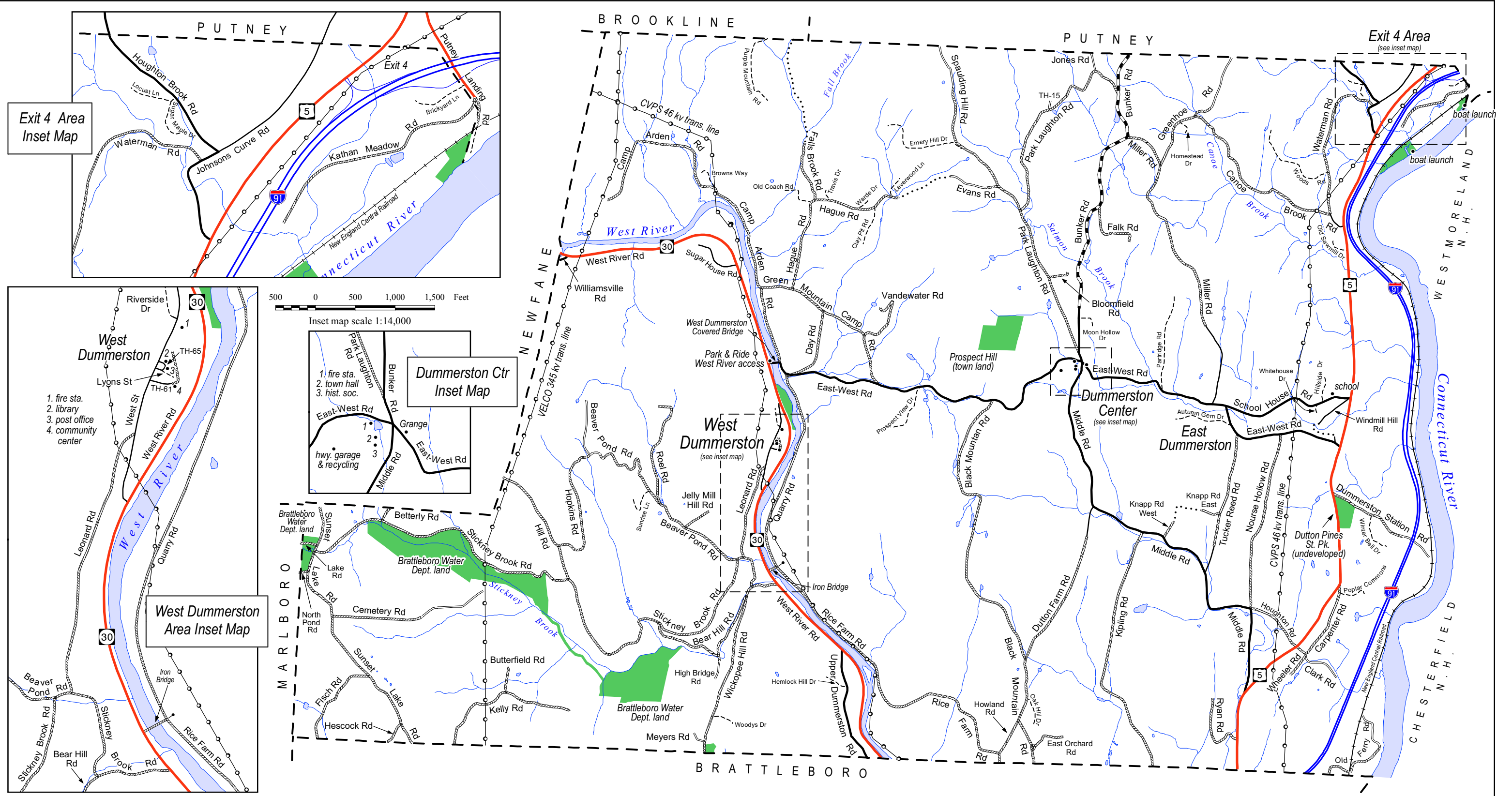
-  Endangered, threatened, rare, or uncommon animal
  -  Endangered, threatened, rare, or uncommon plant
  -  Significant natural community
  -  Deer Wintering Area
  -  Stream
  -  River or pond
- Important Farmland Rating:**
-  Prime
  -  Statewide
- These soils qualify as Primary Agricultural Soils under Act 250.

Sources:

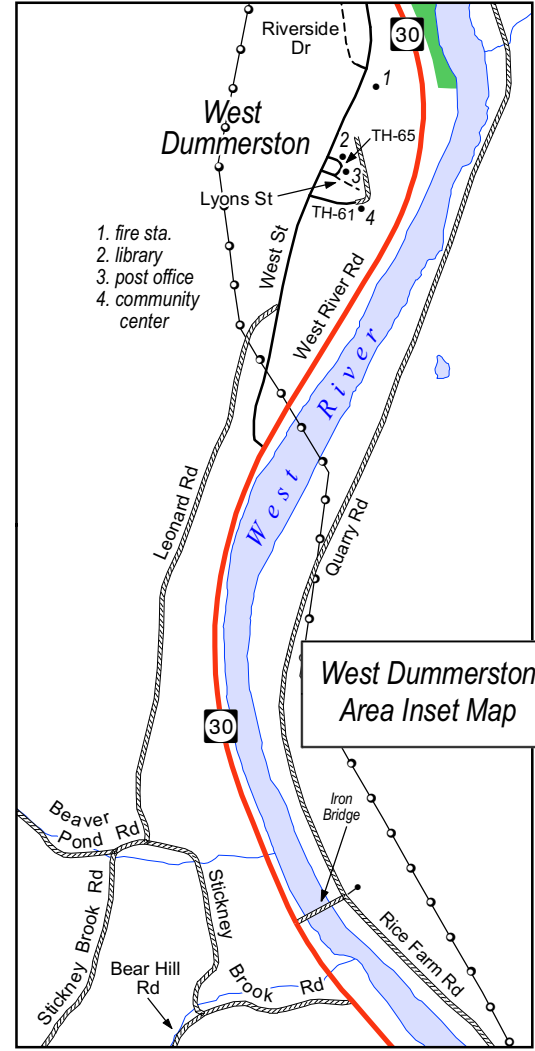
- Surface waters are from the Vermont Hydrography Dataset (VGIS data layer SWnnnnnnn).
- Natural Heritage data are from VT Dept. of Fish and Wildlife, Nongame and Natural Heritage Program's Natural Heritage Inventory Database. This includes data on Rare, Threatened and Endangered Species and Significant Natural Communities database (VGIS layer RTENATCOM), and on uncommon species and other features (VGIS layer UNCOMSPOF), 2015.
- Deer wintering areas are taken from the VGIS data layer DEERWN. They were delineated by VT ANR, Department of Fish and Wildlife, and have been updated to a limited extent through 2011.
- Important farmland soil delineations are derived using soils data. These soils qualify as Primary Agricultural Soils under Act 250. Soil boundaries were digitized from 1:20,000 orthophotos from the Windham County Soil Survey.



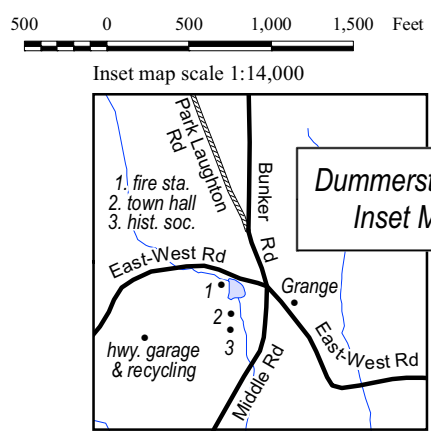




Exit 4 Area Inset Map



West Dummerston Area Inset Map



Dummerston Ctr Inset Map

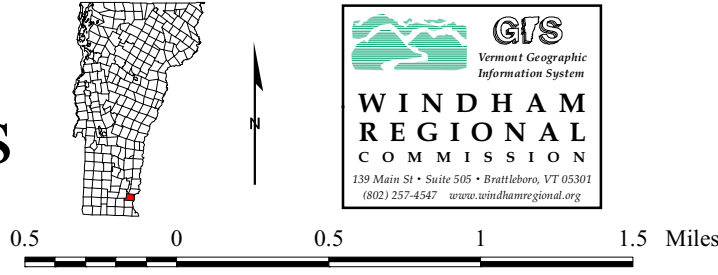
Inset map scale 1:14,000

500 0 500 1,000 1,500 Feet

# Transportation and Community Facilities

## Town of Dummerston, Vt.

March 2017



- Interstate Highway
- US & State Highway
- Class 2 town highway - paved
- Class 2 town highway - unpaved
- Class 3 town highway - paved
- Class 3 town highway - unpaved
- Class 4 town highway (unpaved)

- Legal Town Trail
- Private road/drive
- Railroad
- Town boundary
- Stream
- River or pond
- arrow denotes change in road name
- Electric transmission line
- Public land

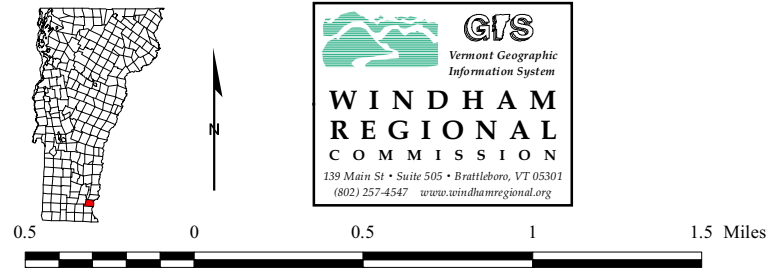
Data sources:

- Highway data are from Vt. Agency of Transportation sources (VGIS data layer RDSnnnnn). Minor updates were performed by Windham Regional Commission in 2017.
- Electric transmission lines are taken from VGIS ELTRN data layer. They were digitized from 1:5000 orthophotos by Greenhorne & O'Mara Inc. under contract with OGIS.
- Community facilities were identified by the Dummerston Planning Commission and mapped by WRC.

# Water Resources

## Town of Dummerston, Vt.

March 2017



- Identified Vernal Pool
- Wetland
- River corridor \*
- Special Flood Hazard Area
- Perennial stream
- Intermittent stream
- River, lake, or pond

\* Official source of River Corridor data is [tinyurl.com/floodreadyatlas](http://tinyurl.com/floodreadyatlas).  
Where river corridors are not mapped, the corridor is taken to be the area within 50 feet of a perennial stream.

Sources:

- Wetlands data are from the Vermont Significant Wetlands Inventory (VGIS data layer VSWI) as of 2010. These include wetlands in the original VSWI data, as well as those from National Wetlands Inventory (NWI) maps, and show approximate locations of wetlands that are generally 3 acres or larger
- Surface waters are from the Vermont Hydrography Dataset (VGIS data layer SWnnnnnn). The dataset was generated at a scale of 1:5000 and was developed using digital orthophotos, topographic maps, color infra-red aerial photography and other ancillary data sources.
- Special Flood Hazard Area boundaries (i.e. "the 100-year floodplain") are from FEMA (Federal Emergency Management Agency) D-FIRM (Digital Flood Insurance Rate Map) data effective September 28, 2007.
- Statewide River Corridors are from VT ANR Rivers Program 2015 data (VGIS data layer RIVERCORRIDORS).
- Vernal pool locations are from a project by the Vermont Center for Ecostudies and Arrowwood Environmental to map vernal pools throughout the state of Vermont. Sites shown have been verified through field visits. Many sites were originally mapped by Alexis Mullen and the Dummerston Conservation Commission's Vernal Pool Monitoring Program. Not all vernal pools have been mapped.

